

# Peripheral Levels of the Brain-Derived Neurotrophic Factor in Coronary Artery Disease: A Systematic Review and Meta-Analysis

Parnian Shobeiri, MD, MPH<sup>1,2,3,4</sup>, Amir Hossein Behnoush, MD, MPH<sup>1,2,4</sup>, Amirmohammad Khalaji, MD<sup>1,2,4</sup>, Antonio Lucio Teixeira, MD<sup>5</sup>, Nima Rezaei, MD, PhD<sup>2,3,6\*</sup>

<sup>1</sup>Children's Medical Center Hospital, School of Medicine, Tehran University of Medical Sciences, Tehran, Iran.

<sup>2</sup>Network of Immunity in Infection, Malignancy and Autoimmunity, Universal Scientific Education and Research Network, Tehran, Iran.

<sup>3</sup>Research Center for Immunodeficiencies, Pediatrics Center of Excellence, Children's Medical Center, Tehran University of Medical Sciences, Tehran, Iran.

<sup>4</sup>Non-Communicable Diseases Research Center, Endocrinology and Metabolism Population Sciences Institute, Tehran University of Medical Sciences, Tehran, Iran.

<sup>5</sup>Department of Psychiatry and Behavioral Sciences, McGovern Medical School, The University of Texas Health Sciences Center at Houston, Houston, TX, United States.

<sup>6</sup>Department of Immunology, School of Medicine, Tehran University of Medical Sciences, Tehran, Iran.

Received 09 April 2023; Accepted 05 August 2023

## Abstract

**Background:** Among its functions, brain-derived neurotrophic factor (BDNF) regulates endothelial and macrophage activation, possibly playing a role in atherosclerotic plaque pathophysiology. Given contradicting reports, this study sought to investigate whether blood levels of BDNF differed between patients with coronary heart disease (CHD) and controls.

**Methods:** We explored PubMed, Embase, Web of Science, and Cochrane Library for studies comparing BDNF blood levels in patients with CHD and controls. Random-effect meta-analysis was conducted to calculate the standardized mean differences (SMD) and 95% confidence intervals (CI). The Newcastle-Ottawa scale was used to evaluate the quality of included articles, and statistical analyses were conducted using R version 4.0.4.

**Results:** The final analysis comprised 12 investigations covering 1422 CHD cases and 929 controls with mean ages of  $59.66 \pm 13.56$  and  $53.78 \pm 13.61$  years, respectively. The initial analyses revealed a tendency toward low levels of BDNF in the CHD group compared with the control group (SMD = -0.41; 95% CI, -1.12 to 0.30;  $P=0.26$ ). After the removal of outliers, the difference achieved statistical difference (SMD = -0.56; 95% CI, -0.93 to -0.19;  $P<0.01$ ). Subgroup analysis demonstrated no significant difference between serum and plasma BDNF levels ( $P=0.54$ ); however, subgroup analyses of studies investigating plasma BDNF showed that patients with CHD had significantly lower BDNF levels.

**Conclusion:** Serum and plasma BDNF concentrations were considerably lower in patients with CHD than in healthy controls. Further studies of higher quality are required on the potential role of BDNF as a biomarker of CHD pathophysiology and severity.

*J Teh Univ Heart Ctr 2023;18(4):244-255*

**This paper should be cited as:** Shobeiri P, Behnoush AH, Khalaji A, Teixeira AL, Rezaei N. Peripheral Levels of the Brain-Derived Neurotrophic Factor in Coronary Artery Disease: A Systematic Review and Meta-Analysis. *J Teh Univ Heart Ctr 2023;18(4):244-255.*

\*Corresponding Author: Nima Rezaei, Corresponding Author: Nima Rezaei, Professor of Medical Immunology, Research Center for Immunodeficiencies, Children's Medical Center, Dr. Gharib Street, Keshavarz Blvd, Tehran, Iran. 14194. Tel: +98 21 66428998. Fax: +98 21 66428998. E-mail: rezaei\_nima@yahoo.com.



**Keywords:** Brain-derived neurotrophic factor; Coronary disease; Systematic review; Meta-analysis

## Introduction

Coronary heart disease (CHD), also known as ischemic heart disease, is a leading cause of death globally. CHD is caused by a combination of mechanisms, such as endothelial dysfunction and inflammation, resulting in atherosclerotic plaques.<sup>1</sup> Diabetes, hypertension, smoking, and obesity all contribute to the acceleration of these events.<sup>2</sup> There is great interest in identifying and validating molecular diagnostic and prognostic markers for CHD, including those originating from damaged myocardial tissue, those that have increased levels in blood circulation after coronary events, and the ones with abnormal levels before coronary events.<sup>3-5</sup>

Brain-derived neurotrophic factor (BDNF) is a neurotrophin expressed in the central nervous system and peripheral tissues.<sup>6,7</sup> Besides its role as a neurotrophic factor, BDNF is involved in the physiology of other tissues, such as the heart.<sup>8</sup> BDNF also plays a role in the development of the heart,<sup>9</sup> endothelial cells,<sup>10</sup> smooth muscle cells,<sup>11</sup> macrophages,<sup>12</sup> lymphocytes,<sup>13</sup> and atherosclerotic vessels.<sup>11</sup> Serum BDNF levels were shown to be low in individuals with CHD who had subsequent coronary events.<sup>14</sup> According to data from the Framingham Heart Study, a high BDNF concentration is related to a reduced risk of CHD and mortality.<sup>14</sup> Previous experimental studies have demonstrated that BDNF promotes endothelial cell survival and neoangiogenesis via the activation of nuclear factor TrkB receptors, inhibits p75-mediated apoptosis of cardiac myocytes, improves endothelial function, modulates blood flow in ischemic myocardium, and enhances left ventricular function following ischemic injury, thereby providing cardioprotective effects.<sup>15,16</sup> Regardless of age, higher BDNF levels are related to higher body mass index (BMI), blood pressure, low-density lipoprotein cholesterol (LDL-C), and cholesterol.<sup>17</sup> On the other hand, higher levels of BDNF are statistically linked to a lower risk of cardiovascular disease and death independent of their risk factors, such as BMI or physical activity.<sup>18</sup>

The present systematic review and meta-analysis sought to synthesize the existing evidence on serum and plasma BDNF levels in patients with CHD compared with controls. In addition, the probable effects of sex, age, sample size, and the quality of included studies on BDNF concentrations were analyzed and discussed.

## Methods

The inclusion criteria were as follows: 1) clinical studies

with a control group that measured serum and/or plasma BDNF levels in control and CHD groups and 2) cross-sectional and interventional studies in which the BDNF concentration was measured before the intervention.

We excluded studies that were case reports or series, letters, reviews, conference abstracts, or pre-clinical/experimental studies.

A comprehensive search was conducted using the Preferred Reporting Items for Systematic Reviews and Meta-Analyses (PRISMA)<sup>19</sup> statement guidelines in international online databases, including PubMed, Embase, Web of Science, and Cochrane Library, to find studies relevant to the selection criteria in July 2022. The search terms included "BDNF" OR "brain-derived neurotrophic factor" AND "ischemic heart" OR "coronary heart disease" and other related terms. No limitations were applied in the search. The details of the searched queries are available in Supplementary Table 1.

Two reviewers (AK and AHB) independently screened all the studies with titles and abstracts for eligibility. The included studies with the full text were screened by AK and AHB separately, and disagreements were settled through discussions with the third author (PS). In addition, the references of the included studies were screened for any possible relevant study.

Two reviewers (AK and AHB) independently used the data extraction sheet designed by the third reviewer (PS) to extract data, including first author, year, and country of publication; demographic characteristics (number of participants, age, and male percentage in CHD and control groups); and plasma and serum BDNF concentrations in each group. The concentration unit was converted to picograms per milliliter (pg/mL) for all the included studies. We contacted the corresponding authors of the studies in which the absolute values of the serum BDNF level were not mentioned.

Assessment of risk of bias in the included studies was performed using the Newcastle-Ottawa Quality Assessment Scale<sup>20</sup> for observational studies. Two reviewers (AHB and AK) independently evaluated the quality of the included studies. Disagreements in the quality evaluation were resolved by the third investigator (PS). Selection, comparability, and outcome were the principal categories of potential bias. Scores of 9–10, 7–8, 5–6, and <5 were considered very good, good, satisfactory, and unsatisfactory studies concerning quality, respectively.

Data analysis was performed using R version 4.0.4 (R Core Team [2020]. R: A language and environment for statistical computing. R Foundation for Statistical Computing, Vienna, Austria). Due to different measurement

methods in the studies, the standardized mean difference (SMD) and the 95% confidence interval (CI) were used to compare CHD patients with controls. Additionally, P values <0.05 were considered the statistical significance cutoff throughout the study.

In the case of the report of the median and interquartile range or the median and range for any needed variable in an article, the mean and standard deviation were calculated based on statistical methods by Luo et al.<sup>21</sup> and Wan et al.<sup>22</sup> In cases where there was a need to combine the groups' means and standard deviations, formulas suggested by Cochrane's Handbook<sup>23</sup> were utilized.

Statistical heterogeneity was evaluated using Higgins' I<sup>2</sup> test based on Cochrane's Q. The thresholds used for heterogeneity I<sup>2</sup> were ≤25%, 26–75%, and ≥75% for low, moderate, and high heterogeneity, respectively. Given the high heterogeneity between the studies, the random effect model (DerSimonian and Laird) was utilized for SMD analysis. To identify the source of heterogeneity, we performed meta-regression on the mean age and the NOS score of the studies. Possible publication bias was investigated via a visual assessment of funnel plots and Egger's and Begg's tests.<sup>24, 25</sup> Finally, potential outliers were identified, and a sensitivity analysis was conducted to evaluate the effect of each study.

## Results

The initial search yielded 1779 references: 1184 from PubMed, 390 from Embase, 47 from Cochrane Library, and 158 from Web of Science. After the exclusion of 484 duplicate studies and 1295 investigations unrelated to our topic, 73 studies examining peripheral BDNF levels in CHD were discovered and thoroughly evaluated. Subsequently, 61 studies were excluded due to various reasons described in Figure 1. Finally, 12 studies,<sup>26-37</sup> including 2351 participants, fulfilled all of the inclusion criteria and were included in the meta-analysis. A detailed flow chart of the search and selection process is presented in Figure 1.

The characteristics of the 12 selected studies are presented in Table 1. All the articles were published between 2005 and 2022. The included investigations yielded 2351 observations, composed of 1422 CHD cases and 929 controls. The average age of the patients and controls were 59.66±13.56 and 53.78±13.61, respectively.<sup>26, 27, 29-37</sup> Biological sources for BDNF analysis were the plasma<sup>26, 29, 32, 34, 36</sup> and the serum.<sup>27, 28, 30, 31, 33, 35, 37</sup> All 12 included studies assessed BDNF levels using enzyme-linked immunosorbent assay (ELISA) as the analytical procedure. All the studies were of high quality, with an average NOS score of 9.43±0.94 (Table 2).

The estimates pooled from the 12 studies showed a tendency toward lower BDNF levels in patients with CHD than in controls (SMD= -0.4089; 95% CI, -1.1168 to 0.2990;

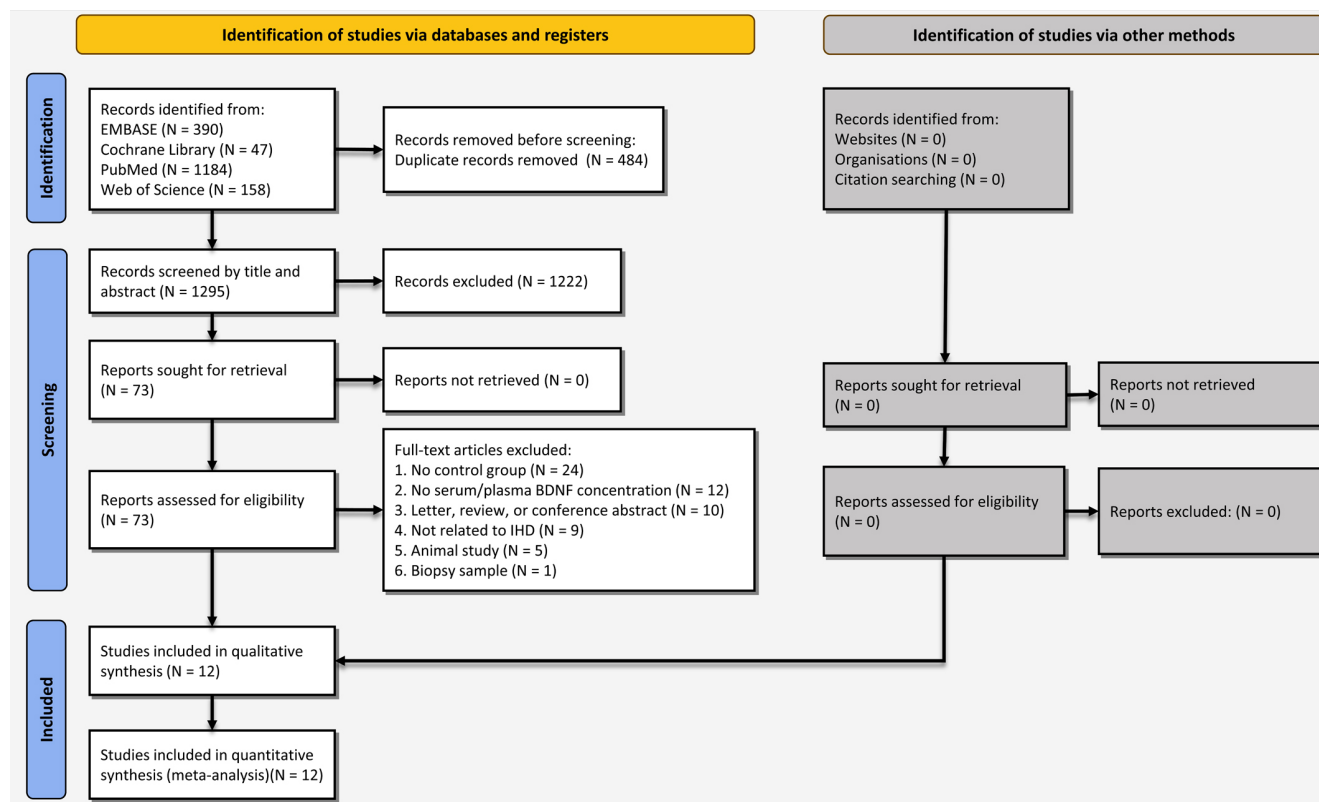


Figure 1. The flow diagram summarizes the selection of eligible studies based on the PRISMA guidelines.



Table 1. Characteristics of the included studies

Author	Year	Design	Country	Analytical Technology	Source	Population	Control	n total	n CHD	Age	% Male
Amadio et al	2021	Cross-Sectional	Italy	ELISA	Plasma	>50% stenosis by visual estimate at angiography	No history of CAD, no MI symptoms, no CV therapy	76	55	61.89±11.62	86.84
Aslan et al	2020	Cross-Sectional	Turkey	ELISA	Serum	Presence of typical exertional angina, positive stress test or reversible myocardial perfusion defects during stress imaging, and angiographically normal coronary arteries (MVA)	Normal coronary arteries, inconclusive findings in stress tests or functional imaging, and no CAD in angiography	152	91	57.28±29.11	44.74
Bai et al	2019	Cross-Sectional	China	ELISA	Serum	Chronic CHD according to the clinical guidelines by the ACC/AHA	NR	211	108	NR	NR
Ejiri et al	2005	Cross-Sectional	Japan	Sandwich ELISA	Plasma (Peripheral Vein)	>75% stenotic lesions in the LCA determined by myocardial perfusion scintigraphy to be the culprit lesion (UA or SA)	No significant coronary artery stenosis >25% luminal diameter	107	83	64.46±25.86	65.42
Esmacili et al	2021	Cross-Sectional	Iran	ELISA	Serum	At least one major coronary artery with > 50% stenosis confirmed by angiography (CAD)	Normal angiogram and no coronary stenosis	146	84	53.50±9.41	60.96
Forent et al	2022	Cross-Sectional	Canada	ELISA	Plasma	Documented CHD	Without cardiac disease and aortic stenosis symptoms	59	39	64.92±8.07	71.19
Han et al	2019	Cross-Sectional	China	DAS-ELISA	Serum	At least one of the three major coronary arteries or major branches significant coronary artery stenosis ≥50%	Normal clinical, physical, radiographic, and ECG examinations	257	156	59.58±9.83	58.37
Jin et al	2018	Cross-Sectional	China	ELISA	Plasma	>50% stenosis of the primary coronary artery or its major branches	<20% stenosis	234	143	65.92±10.54	65.38
Monisha et al	2020	Cross-Sectional	India	ELISA	Serum	Lesion >30% in the primary coronary artery or its major branches	Lesion ≤30%	221	116	55.94±10.97	NR
Sustar et al	2019	Cross-Sectional	Croatia	ELISA	Plasma	>50% stenotic lesions in at least one major coronary vessel, MI, coronary stent implantation, and coronary artery bypass surgery. (CHD=SA/UA)	Screened during routine physical check-ups in the same hospital	364	208	50.72±11.14	53.30
Wu et al	2022	Cross-Sectional	China	ELISA	Serum	Criteria of coronary heart disease in "Diagnostic Criteria for Coronary Atherosclerotic Heart Disease", and coronary angiography shows that the inner diameter of any one of the left main trunks, left circumflex artery, left anterior descending artery, and right coronary artery stenosis degree ≥50% or left main stem stenosis >30%	NR	277	132	51.35±10.23	42.60
Xia et al	2022	Cross-Sectional	China	ELISA	Serum	Diagnosed as CHD by coronary angiography	Non-CHD by coronary angiography	247	207	NR	NR

SA, Stable angina; UA, Unstable angina; MI, Myocardial infarction; CAD, Coronary artery disease; CHD, Coronary heart disease; ACS, Acute coronary syndrome; CV, Cardiovascular; MVA, Microvascular Angina; LCA, Left coronary artery; ECG, Electrocardiogram; ACC, American College of Cardiology; AHA, American Heart Association; NR, Not reported

Table 2. Quality assessment of the included studies based on the Newcastle-Ottawa scale (NOS)

Study	Selection				Comparability	Outcome		Overall Score
	Representation	Sample Size	Non-Respondents	Exposure		Outcome	Statistical Test	
Amadio et al	*	*	*	**	**	**	*	10
Aslan et al	*	*	*	**	0	**	*	8
Bai et al	*	*	*	**	**	**	*	10
Ejiri et al	*	*	*	**	0	**	*	8
Esmaeili et al	*	*	*	**	**	**	*	10
Forent et al	*	*	*	**	**	**	*	10
Han et al	*	*	*	**	**	**	*	10
Jin et al	*	*	*	**	**	**	*	10
Monisha et al	*	*	*	**	0	**	*	8
Sustar et al	*	*	*	**	**	**	*	10
Wu et al	*	*	*	**	**	**	*	10
Xia et al	*	*	*	**	0	**	*	8

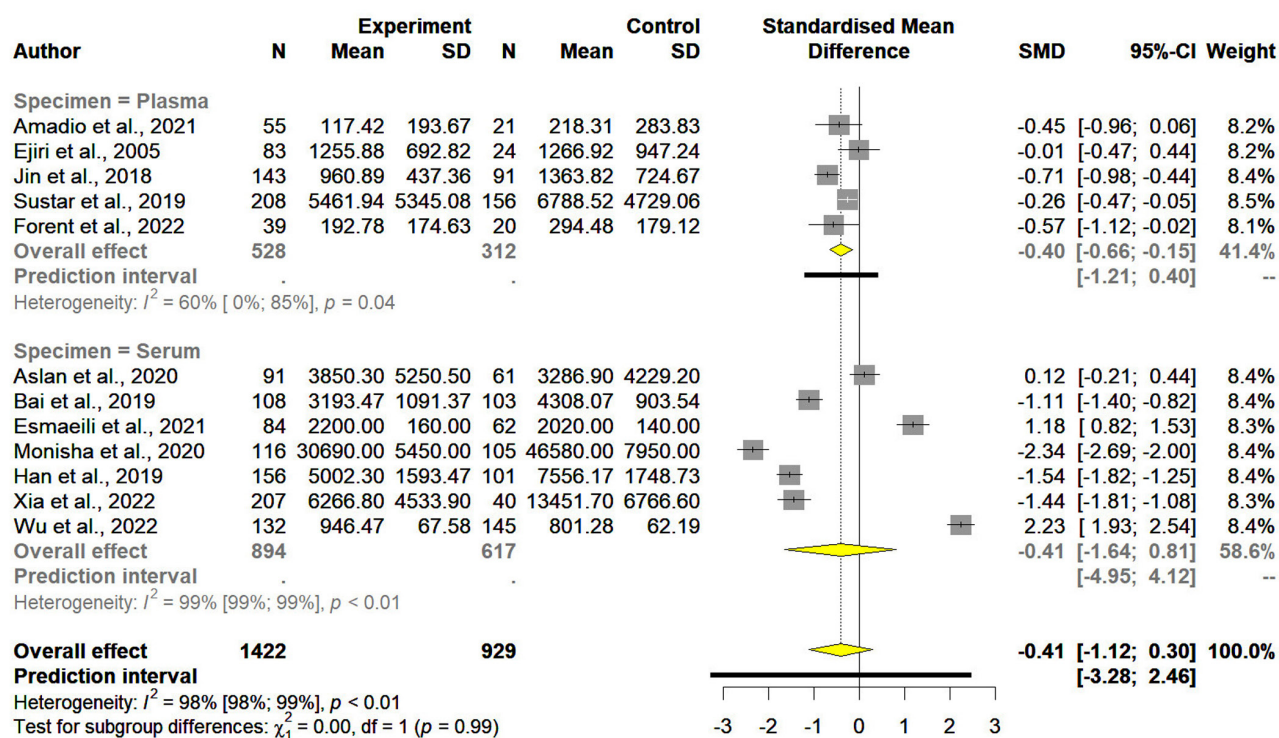


Figure 2. The image illustrates the forest plot of the subgroup meta-analysis of BDNF levels in the CHD group compared with the control group. BDNF, Brain-derived neurotrophic factor; CHD, Coronary heart disease

$P=0.2576$ ) (Figure 2). However, there was significant statistical heterogeneity across the studies ( $I^2, 98.2%$ ;  $P<0.0001$ ).

In the 1<sup>2</sup> studies included in this meta-analysis, BDNF levels were investigated in the serum by 7 and in the plasma by 5. Lower BDNF levels were found in CHD compared with controls in both subgroups of studies. The pooled SMD was -0.4148 (95% CI, -1.6426 to 0.8130;  $P=0.51$ ) for BDNF levels assessed in the serum and -0.4042 (95% CI, -0.6589 to -0.1494;  $P<0.01$ ) for BDNF levels assessed in the plasma (Figure 2). Subgroup comparisons found no

significant difference between BDNF concentration SMD reported in the serum and plasma between CHD and controls ( $P=0.9867$ ).

The funnel plot was symmetric (Figure 3). Moreover, Begg's and Egger's tests did not reveal significant evidence of publication bias among the included studies (Begg's test:  $P=1.00$ ; Egger's test:  $P=0.98$ ).

Meta-regression analyses were applied to investigate heterogeneity sources between the studies and the influence of modifiers. Univariable meta-regression models showed no relationships between sample size, age, NOS score,



sex, and BDNF levels (Table 3 & Figure 4). Moreover, age accounted for 17.83%, and male sex accounted for 11.18%

of observed heterogeneity, while the others could not justify the heterogeneity.

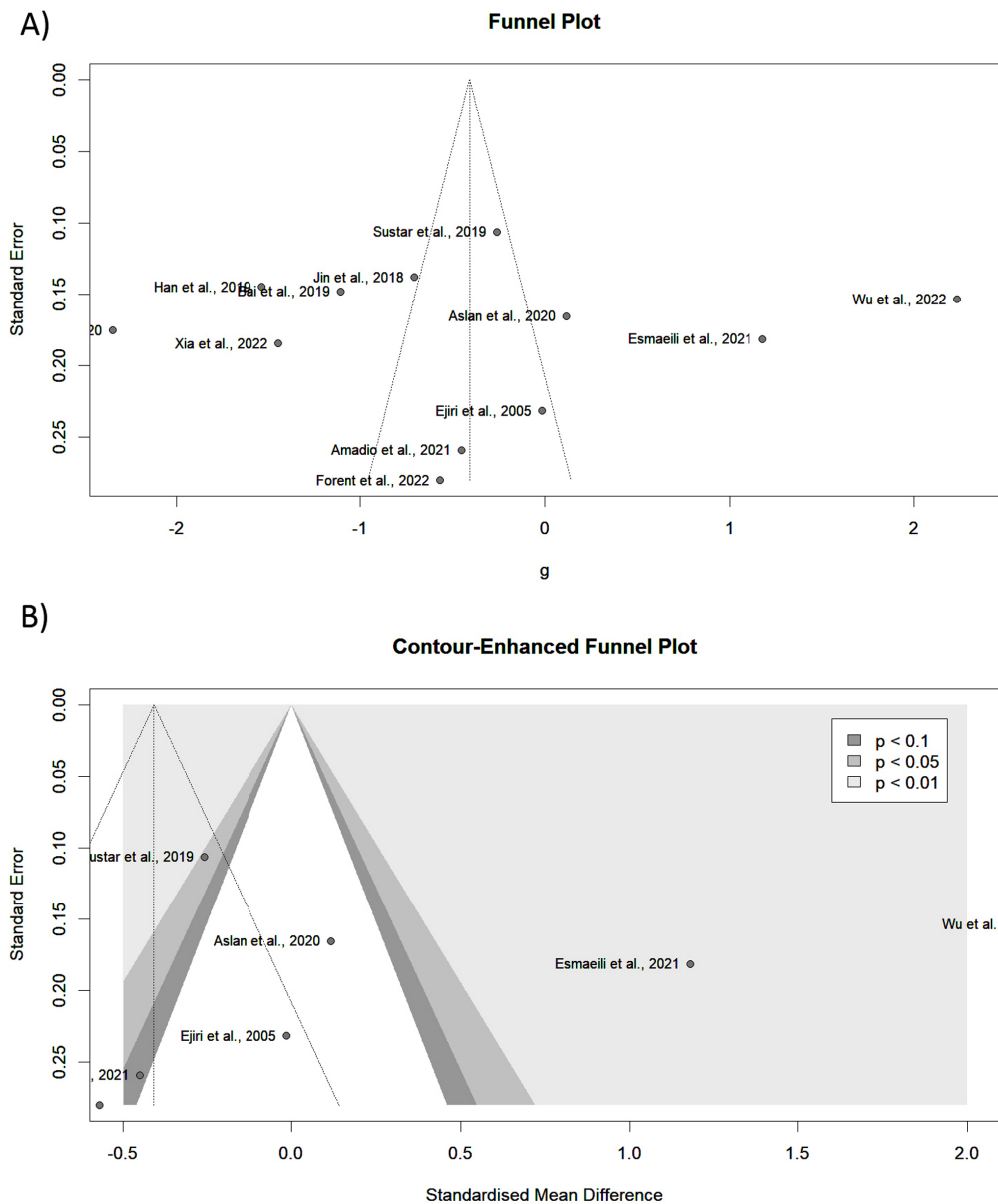


Figure 3. A) The funnel plot shows no evidence of publication bias, statistically supported by Egger's regression test. B) The image presents the counter-enhanced funnel plot.

Table 3. Meta-regression of BDNF levels in patients with CHD and healthy controls

Moderator	No. of comparisons	No. of Subjects		Meta-Regression			P	R <sup>2</sup> Analog (proportion of the variance explained)
		CHD	HC	Slope	Lower 95% CI	Upper 95% CI		
Sample Size	12	1422	929	-0.005	-0.019	0.010	0.527	0%
Age (mean, y)	11	1314	826	-0.118	-0.258	0.021	0.096	17.8%
NOS score	12	1422	929	0.387	-0.367	1.141	0.315	0%
Sex (male, %)	10	1198	721	-0.034	-0.082	0.014	0.161	11.2%

NOS, Newcastle-Ottawa scale; CHD, Coronary heart disease; HC, Healthy control; CI, Confidence interval

Studies by Han et al,<sup>30</sup> Monisha et al,<sup>31</sup> and Esmaeili et al<sup>33</sup> were identified as outliers. Accordingly, we repeated the meta-analysis of the remaining 6 studies. The results showed an SMD of -0.5595 (95% CI, -0.9293 to -0.1896;

$P=0.0030$ ) (Figure 5), indicating statistically significantly lower BDNF levels in CHD participants than in controls. (The  $P$  value dropped from 0.2576 to 0.003.) However, considerable statistical heterogeneity remained across the

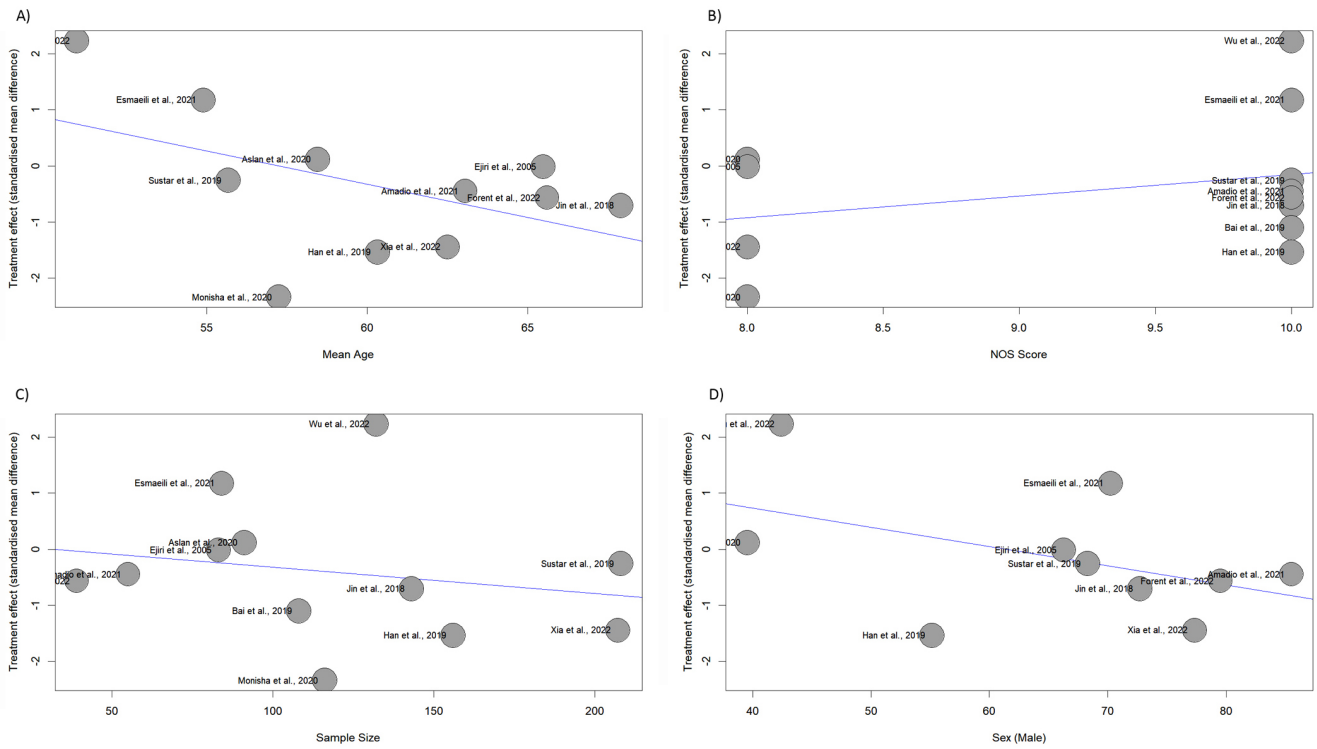


Figure 4. The images present the bubble plots of the meta-regression.

A) mean age, B) NOS score, C) sample size, and D) sex (male)

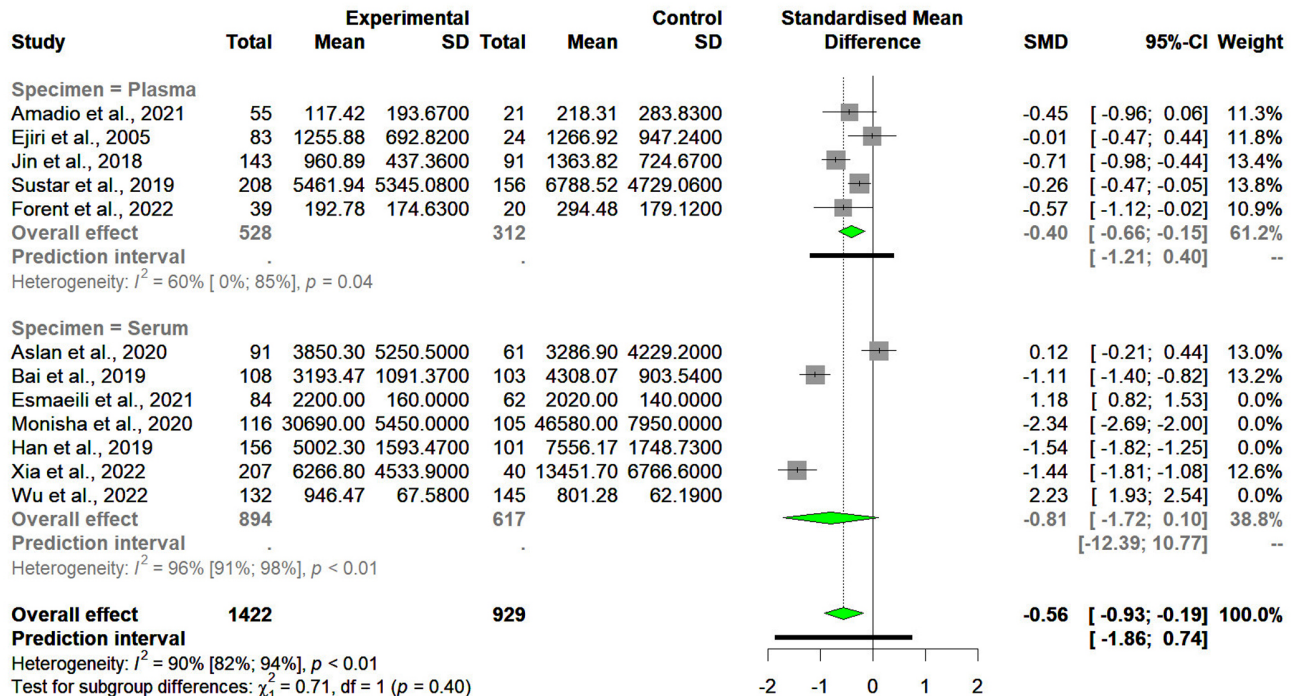


Figure 5. The forest plot of the meta-analysis of BDNF levels in patients with CHD after the removal of outliers is presented herein.

BDNF, Brain-derived neurotrophic factor; CHD, Coronary heart disease

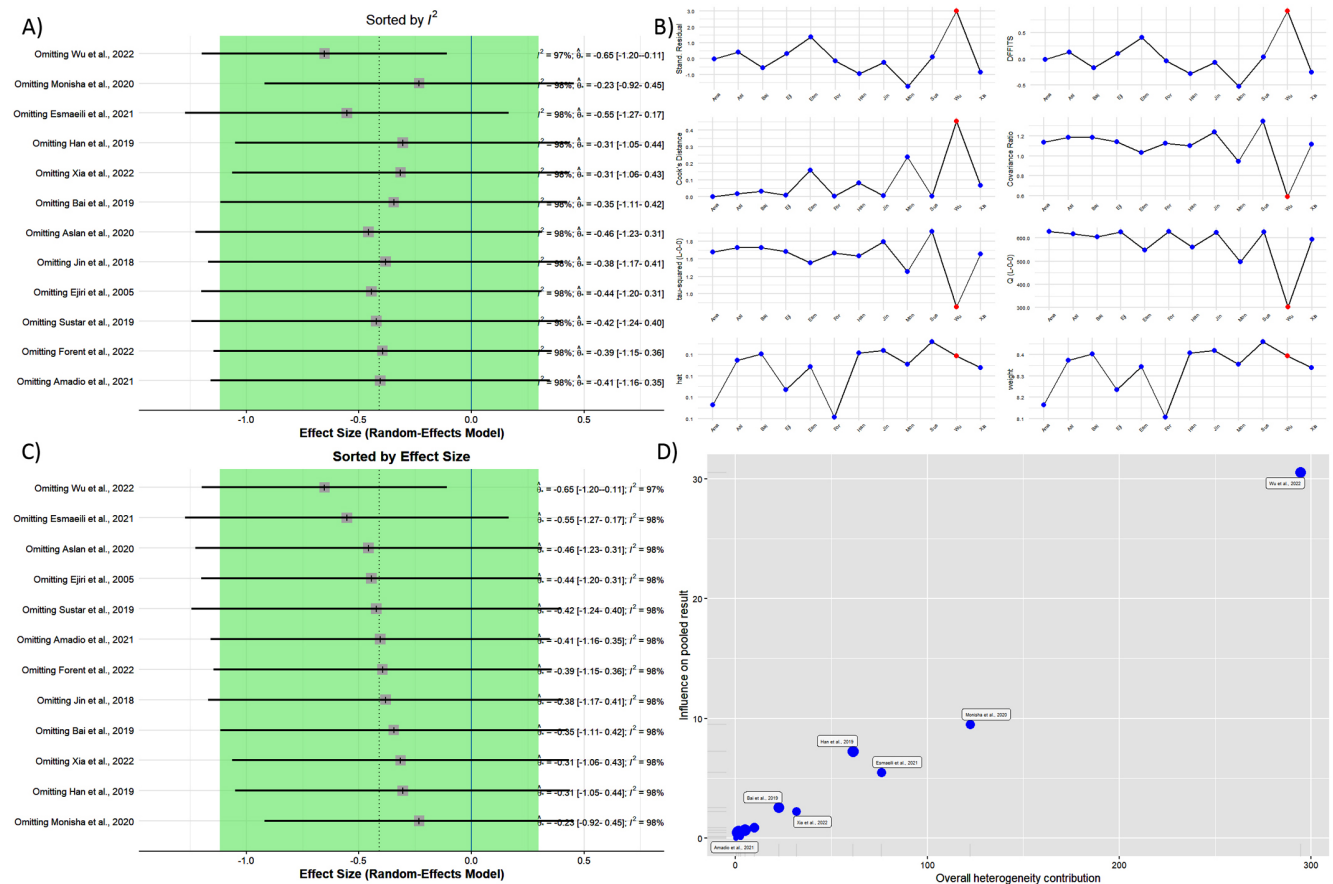


Figure 6. The images present the results of the sensitivity analyses (leave-one-out analysis) of the meta-analysis.

A) Sorted by  $I^2$ .

B) The influence analysis plot shows influence diagnostics, including externally standardized residuals, the DFFITS value, Cook's distance, covariance ratio, leave-one-out  $\tau^2$ , Q value, hat value, and study Weight.

C) Sorted by effect size

D) Baujat's plot is illustrated herein.

DFFITS, Difference in fits

studies ( $I^2$ , 89.7%;  $P < 0.0001$ ).

The impact of each study on the overall estimate was determined by systematically omitting studies and comparing the pooled estimate from the remaining 11 studies to the pooled estimate from all 12 studies. The results indicated that patients with CHD had lower peripheral BDNF levels than controls in all the studies except for that by Wu et al,<sup>37</sup> which changed the results statistically significantly after being removed (SMD= -0.65; 95% CI, -1.20 to -0.11) (Figure 6).

## Discussion

To our knowledge, this is the first meta-analysis of studies to compare BDNF peripheral levels between patients with chronic CHD and healthy controls. CHD was associated with significantly lower levels of BDNF. Moreover, subgroup analysis revealed statistically significantly lower

plasma BDNF levels in patients with CHD and not serum levels.

Previous studies have suggested a significant role for BDNF in cardiovascular development, functions, risk factors, and disorders.<sup>38-41</sup> In mice, BDNF perfusion increased cardiac contraction force and systolic pressure but decreased diastolic pressure, not affecting coronary blood flow.<sup>42</sup> In a prospective cohort, a lower plasma level of BDNF was associated with a higher risk of major coronary events in angina pectoris patients with a median follow-up of 48 months.<sup>43</sup> There is also an inverse relation between BDNF and atherogenic index (total cholesterol/HDL-C), high-sensitivity C-reactive protein, and oxidized LDL.<sup>44</sup> The higher levels of BDNF in multiple sclerosis patients with higher activities may be attributable to the normal population and can be another possible mechanism indirectly affecting CHD.<sup>45</sup> Conversely, higher BDNF levels were related to higher BMI, blood pressure, LDL-C, and cholesterol<sup>17</sup> (ie, risk factors for CHD). In this scenario,



BDNF might increase as a response to risk factors of disease progression (eg, high cholesterol), exerting protective roles.

Several studies have suggested the pathophysiology of the association between cardiovascular disease and circulating BDNF. BDNF is expressed in vascular endothelial cells, the smooth muscle of atherosclerotic coronary arteries, and macrophages, in addition to the neural system.<sup>29, 46</sup> Thus, a study suggested that BDNF might affect plaque stability, although the clinical relevance of this hypothesis is still uncertain.<sup>47</sup> In contrast with this local effect, the effect of BDNF on the integrity and maintenance of cardiac vasculature may be more critical. In an *in vivo* study, low BDNF levels in mice resulted in less survival of the endothelial cells in myocardial arteries and, finally, postnatal death.<sup>48</sup>

As serum and plasma BDNF levels have a strong positive correlation,<sup>49</sup> we used both sources of BDNF (plasma and serum) in this meta-analysis as subgroup analysis. The average serum BDNF level is higher (100-fold in a study by Radka et al<sup>49</sup> and 14-fold in a study by Yoshimura et al<sup>50</sup>) than plasma levels. As human platelets contain large amounts of BDNF, this difference is due to the clotting process in which platelets degranulate.<sup>51, 52</sup> Serum BDNF levels, in contrast with plasma levels, are primarily dependent on clotting time, which varies between studies.<sup>53</sup> These disparities in serum levels may be why our results in the plasma subgroup were statistically significant. We found no relevant study that evaluated both serum and plasma levels of BDNF in patients with CHD and controls. Further research may help investigate the difference we mentioned in terms of meaningfulness.

The results of the present study suggest the possibility of the diagnostic value of BDNF for CHD, but more importantly, it highlights the possible pathophysiological pathway from BDNF to CHD, which can assist in designing and using novel therapies for CHD. Until now, the most therapeutic applications of BDNF have been in neurological diseases, with an oral BDNF agonist from the plant flavonoids showing effectiveness on stroke and Parkinson's disease in mice.<sup>54</sup> Further trials and studies are needed to investigate such effects for the prevention of cardiovascular disease.

While being the first meta-analysis to investigate blood BDNF levels in CHD, this study had some limitations. Firstly, the lack of proper matching for confounders in the studies could influence their results and, therefore, our analysis. We only included cross-sectional, case-control, or cohort studies that had both CHD and control groups. The low number of included studies and the low number of studies in our subgroup analysis were also considerable limitations. We excluded studies that mentioned the BDNF levels only graphically and/or did not mention the quantitative data. The authors did not respond to our email requests for their data, and we had to exclude the studies due

to not having the required data for meta-analysis. Finally, the statistical methods used for converting the median and the interquartile range to the mean and standard deviation, as suggested by Luo et al<sup>21</sup> and Wan et al,<sup>22</sup> although they are used in many meta-analysis studies, may affect the results due to the possible skewness of a variable distribution. Future studies with larger sample sizes investigating the association between the severity of chronic CHD and BDNF levels might help identify the pathophysiology of our findings.

## Conclusion

To summarize, peripheral concentrations of BDNF were significantly lower in patients with CHD than in healthy controls, principally because of studies that measured plasma BDNF.

## References

1. Tousoulis D, Charakida M, Stefanadis C. Endothelial function and inflammation in coronary artery disease. *Postgrad Med J* 2008;84:368-371.
2. Munnur RK, Nerlekar N, Wong DT. Imaging of coronary atherosclerosis in various susceptible groups. *Cardiovasc Diagn Ther* 2016;382-395.
3. Pasipoularides A. Genomic translational research: Paving the way to individualized cardiac functional analyses and personalized cardiology. *Int J Cardiol* 2017;230:384-401.
4. Wu Y, Pan N, An Y, Xu M, Tan L, Zhang L. Diagnostic and Prognostic Biomarkers for Myocardial Infarction. *Front Cardiovasc Med* 2021;7:617277.
5. Raygan F, Etminan A, Mohammadi H, Akbari H, Nikoueinejad H. Serum Levels of Growth Differentiation Factor-15 as an Inflammatory Marker in Patients with Unstable Angina Pectoris. *J Tehran Heart Cent* 2021;16:15-19.
6. Bathina S, Das UN. Brain-derived neurotrophic factor and its clinical implications. *Arch Med Sci* 2015;11:1164-1178.
7. Scalzo P, Kümmer A, Bretas TL, Cardoso F, Teixeira AL. Serum levels of brain-derived neurotrophic factor correlate with motor impairment in Parkinson's disease. *J Neurol* 2010;257:540-545.
8. Numakawa T, Odaka H, Adachi N. Actions of Brain-Derived Neurotrophin Factor in the Neurogenesis and Neuronal Function, and Its Involvement in the Pathophysiology of Brain Diseases. *Int J Mol Sci* 2018;19:3650.
9. Clegg DO, Large TH, Bodary SC, Reichardt LF. Regulation of nerve growth factor mRNA levels in developing rat heart ventricle is not altered by sympathectomy. *Dev Biol* 1989;134:30-37.
10. Nakahashi T, Fujimura H, Altar CA, Li J, Kambayashi J, Tandon NN, Sun B. Vascular endothelial cells synthesize and secrete brain-derived neurotrophic factor. *FEBS Lett* 2000;470:113-117.
11. Donovan MJ, Miranda RC, Kraemer R, McCaffrey TA, Tessarollo L, Mahadeo D, Sharif S, Kaplan DR, Tsoulfas P, Parada L, et al. Neurotrophin and neurotrophin receptors in vascular smooth muscle cells. Regulation of expression in response to injury. *Am J Pathol* 1995;147:309-324.
12. Barouch R, Appel E, Kazimirsky G, Brodie C. Macrophages express neurotrophins and neurotrophin receptors. Regulation of nitric oxide production by NT-3. *J Neuroimmunol* 2001;112:72-77.
13. Kerschensteiner M, Gallmeier E, Behrens L, Leal VV, Misgeld T, Klinkert WE, Kolbeck R, Hoppe E, Oropeza-Wekerle RL, Bartke



- I, Stadelmann C, Lassmann H, Wekerle H, Hohlfeld R. Activated human T cells, B cells, and monocytes produce brain-derived neurotrophic factor in vitro and in inflammatory brain lesions: a neuroprotective role of inflammation? *J Exp Med* 1999;189:865-870.
14. Kaess BM, Preis SR, Lieb W, Beiser AS, Yang Q, Chen TC, Hengstenberg C, Erdmann J, Schunkert H, Seshadri S, Vasan RS; CARDIoGRAM; Assimes TL, Deloukas P, Holm H, Kathiresan S, König IR, McPherson R, Reilly MP, Roberts R, Samani NJ, Stewart AF. Circulating brain-derived neurotrophic factor concentrations and the risk of cardiovascular disease in the community. *J Am Heart Assoc* 2015 Mar;4:e001544.
  15. Donovan MJ, Lin MI, Wiegand P, Ringstedt T, Kraemer R, Hahn R, Wang S, Ibañez CF, Rafii S, Hempstead BL. Brain derived neurotrophic factor is an endothelial cell survival factor required for intramyocardial vessel stabilization. *Development* 2000;127:4531-4540.
  16. László A, Lénárt L, Illésy L, Fekete A, Nemcsik J. The role of neurotrophins in psychopathology and cardiovascular diseases: psychosomatic connections. *J Neural Transm (Vienna)* 2019;126:265-278.
  17. Golden E, Emiliano A, Maudsley S, Windham BG, Carlson OD, Egan JM, Driscoll I, Ferrucci L, Martin B, Mattson MP. Circulating brain-derived neurotrophic factor and indices of metabolic and cardiovascular health: data from the Baltimore Longitudinal Study of Aging. *PLoS One* 2010;5:e10099.
  18. Kaess BM, Preis SR, Lieb W, Beiser AS, Yang Q, Chen TC, Hengstenberg C, Erdmann J, Schunkert H, Seshadri S, Vasan RS; CARDIoGRAM; Assimes TL, Deloukas P, Holm H, Kathiresan S, König IR, McPherson R, Reilly MP, Roberts R, Samani NJ, Stewart AF. Circulating brain-derived neurotrophic factor concentrations and the risk of cardiovascular disease in the community. *J Am Heart Assoc*. 2015 Mar 11;4(3):e001544.
  19. Moher D, Liberati A, Tetzlaff J, Altman DG; PRISMA Group. Preferred reporting items for systematic reviews and meta-analyses: the PRISMA statement. *Ann Intern Med* 2009;151:264-269, W64.
  20. Stang A. Critical evaluation of the Newcastle-Ottawa scale for the assessment of the quality of nonrandomized studies in meta-analyses. *Eur J Epidemiol* 2010;25:603-605.
  21. Luo D, Wan X, Liu J, Tong T. Optimally estimating the sample mean from the sample size, median, mid-range, and/or mid-quartile range. *Stat Methods Med Res* 2018;27:1785-1805.
  22. Wan X, Wang W, Liu J, Tong T. Estimating the sample mean and standard deviation from the sample size, median, range and/or interquartile range. *BMC Med Res Methodol* 2014;14:135.
  23. Higgins JPT, Thomas J, Chandler J, Cumpston M, Li T, Page MJ, Welch VA (editors). *Cochrane Handbook for Systematic Reviews of Interventions*. 2nd ed. Chichester (UK): John Wiley & Sons; 2019.
  24. Begg CB, Mazumdar M. Operating characteristics of a rank correlation test for publication bias. *Biometrics* 1994;50:1088-1101.
  25. Egger M, Davey Smith G, Schneider M, Minder C. Bias in meta-analysis detected by a simple, graphical test. *BMJ* 1997;315:629-634.
  26. Amadio P, Cosentino N, Eligini S, Barbieri S, Tedesco CC, Sandrini L, Zarà M, Fabiocchi F, Niccoli G, Magnani G, Fracassi F, Crea F, Veglia F, Marenzi G, Barbieri SS. Potential Relation between Plasma BDNF Levels and Human Coronary Plaque Morphology. *Diagnostics (Basel)* 2021;11:1010.
  27. Aslan G, Polat V, Bozcali E, Şahin MH, Çetin N, Ural D. Evaluation of serum platelet-derived growth factor receptor-β and brain-derived neurotrophic factor levels in microvascular angina. *Anatol J Cardiol* 2020;24:397-404.
  28. Bai HL, Lu ZF, Zhao JJ, Ma X, Li XH, Xu H, Wu SG, Kang CM, Lu JB, Xu YJ, Xiao L, Wu Q, Ye S, Wang Q, Zheng L, Hu YW. Microarray profiling analysis and validation of novel long non-coding RNAs and mRNAs as potential biomarkers and their functions in atherosclerosis. *Physiol Genomics* 2019;51:644-656.
  29. Ejiri J, Inoue N, Kobayashi S, Shiraki R, Otsui K, Honjo T, Takahashi M, Ohashi Y, Ichikawa S, Terashima M, Mori T, Awano K, Shinke T, Shite J, Hirata K, Yokozaki H, Kawashima S, Yokoyama M. Possible role of brain-derived neurotrophic factor in the pathogenesis of coronary artery disease. *Circulation* 2005;112:2114-2120.
  30. Esmaeili F, Mansouri E, Emami MA, Montazerghaem H, Hosseini Teshnizi S, Kheirandish M, Koochakkhani S, Eftekhari E. Association of Serum Level and DNA Methylation Status of Brain-Derived Neurotrophic Factor with the Severity of Coronary Artery Disease. *Indian J Clin Biochem* 2022;37:159-168.
  31. Han W, Zhang C, Wang H, Yang M, Guo Y, Li G, Zhang H, Wang C, Chen D, Geng C, Jiang P. Alterations of irisin, adropin, preptin and BDNF concentrations in coronary heart disease patients comorbid with depression. *Ann Transl Med* 2019;7:298.
  32. Jin H, Chen Y, Wang B, Zhu Y, Chen L, Han X, Ma G, Liu N. Association between brain-derived neurotrophic factor and von Willibrand factor levels in patients with stable coronary artery disease. *BMC Cardiovasc Disord* 2018;18:23.
  33. Monisha KG, Prabu P, Chokkalingam M, Murugesan R, Milenkovic D, Ahmed SSSJ. Clinical utility of brain-derived neurotrophic factor as a biomarker with left ventricular echocardiographic indices for potential diagnosis of coronary artery disease. *Sci Rep* 2020;10:16359.
  34. Sustar A, Perkovic MN, Erjavec GN, Strac DS, Pivac N. Association between reduced brain-derived neurotrophic factor concentration & coronary heart disease. *Indian J Med Res* 2019;150:43-49.
  35. Xia F, Zeng Q, Chen J. Circulating brain-derived neurotrophic factor dysregulation and its linkage with lipid level, stenosis degree, and inflammatory cytokines in coronary heart disease. *J Clin Lab Anal* 2022;36:e24546.
  36. Florent B, Maxime B, Catherine-Alexandra G, Christine G, Nathalie TT, Eric T, Anil N, Martin J, Jonathan T, Mathieu G, Louis B. Differences in cognitive function, cardiorespiratory fitness and BDNF concentration in physically active CHD patients vs healthy controls. *Brain Res* 2022;1793:148019.
  37. Wu Y, Wang L, Zhan Y, Zhang Z, Chen D, Xiang Y, Xie C. The expression of SAH, IL-1β, Hcy, TNF-α and BDNF in coronary heart disease and its relationship with the severity of coronary stenosis. *BMC Cardiovasc Disord* 2022;22:101.
  38. Bahls M, Könemann S, Markus MRP, Wenzel K, Friedrich N, Nauck M, Völzke H, Steveling A, Janowitz D, Grabe HJ, Felix SB, Dörr M. Brain-derived neurotrophic factor is related with adverse cardiac remodeling and high NTproBNP. *Sci Rep* 2019;9:15421.
  39. Kermani P, Hempstead B. BDNF Actions in the Cardiovascular System: Roles in Development, Adulthood and Response to Injury. *Front Physiol* 2019;10:455.
  40. Khalaji A, Behnoush AH, Shobeiri P, Saeeadian B, Teixeira AL, Rezaei N. Association between brain-derived neurotrophic factor levels and obstructive sleep apnea: a systematic review and meta-analysis. *Sleep Breath* 2023;27:829-841.
  41. Hang PZ, Zhu H, Li PF, Liu J, Ge FQ, Zhao J, Du ZM. The Emerging Role of BDNF/TrkB Signaling in Cardiovascular Diseases. *Life (Basel)* 2021;11:70.
  42. Fulgenzi G, Tomassoni-Ardori F, Babini L, Becker J, Barrick C, Puvarel S, Tessarollo L. BDNF modulates heart contraction force and long-term homeostasis through truncated TrkB.T1 receptor activation. *J Cell Biol* 2015;210:1003-1012.
  43. Jiang H, Liu Y, Zhang Y, Chen ZY. Association of plasma brain-derived neurotrophic factor and cardiovascular risk factors and prognosis in angina pectoris. *Biochem Biophys Res Commun* 2011;415:99-103.
  44. Zembron-Lacny A, Dziubek W, Rynkiewicz M, Morawin B, Woźniewski M. Peripheral brain-derived neurotrophic factor is related to cardiovascular risk factors in active and inactive elderly men. *Braz J Med Biol Res* 2016;49:e5253.
  45. Shobeiri P, Karimi A, Momtazmanesh S, Teixeira AL, Teunissen CE, van Wegen EEH, Hirsch MA, Yekaninejad MS, Rezaei N. Exercise-induced increase in blood-based brain-derived neurotrophic factor (BDNF) in people with multiple sclerosis: A systematic review and meta-analysis of exercise intervention trials.



- PLoS One 2022;17:e0264557.
46. Nakahashi T, Fujimura H, Altar CA, Li J, Kambayashi J, Tandon NN, Sun B. Vascular endothelial cells synthesize and secrete brain-derived neurotrophic factor. *FEBS Lett* 2000;470:113-117.
  47. Ejiri J, Inoue N, Kobayashi S, Shiraki R, Otsui K, Honjo T, Takahashi M, Ohashi Y, Ichikawa S, Terashima M, Mori T, Awano K, Shinke T, Shite J, Hirata K, Yokozaki H, Kawashima S, Yokoyama M. Possible role of brain-derived neurotrophic factor in the pathogenesis of coronary artery disease. *Circulation* 2005;112:2114-2120.
  48. Donovan MJ, Lin MI, Wiegand P, Ringstedt T, Kraemer R, Hahn R, Wang S, Ibañez CF, Rafii S, Hempstead BL. Brain derived neurotrophic factor is an endothelial cell survival factor required for intramyocardial vessel stabilization. *Development* 2000;127:4531-4540.
  49. Yoshimura R, Sugita-Ikenouchi A, Hori H, Umene-Nakano W, Hayashi K, Katsuki A, Ueda N, Nakamura J. A close correlation between plasma and serum levels of brain-derived neurotrophic factor (BDNF) in healthy volunteers. *Int J Psychiatry Clin Pract* 2010;14:220-222.
  50. Radka SF, Holst PA, Fritsche M, Altar CA. Presence of brain-derived neurotrophic factor in brain and human and rat but not mouse serum detected by a sensitive and specific immunoassay. *Brain Res* 1996;709:122-301.
  51. Fujimura H, Altar CA, Chen R, Nakamura T, Nakahashi T, Kambayashi J, Sun B, Tandon NN. Brain-derived neurotrophic factor is stored in human platelets and released by agonist stimulation. *Thromb Haemost* 2002;87:728-734.
  52. Pliego-Rivero FB, Bayatti N, Giannakouloupoulos X, Glover V, Bradford HF, Stern G, Sandler M. Brain-derived neurotrophic factor in human platelets. *Biochem Pharmacol* 1997;54:207-209.
  53. Gejl AK, Enevold C, Bugge A, Andersen MS, Nielsen CH, Andersen LB. Associations between serum and plasma brain-derived neurotrophic factor and influence of storage time and centrifugation strategy. *Sci Rep* 2019;9:9655.
  54. Jang SW, Liu X, Yepes M, Shepherd KR, Miller GW, Liu Y, Wilson WD, Xiao G, Blanchi B, Sun YE, Ye K. A selective TrkB agonist with potent neurotrophic activities by 7,8-dihydroxyflavone. *Proc Natl Acad Sci U S A* 2010;107:2687-2692.



## Supplementary Material

**Table 1. Search queries used for each database and the search results**

	Query	Results (No.)
<b>PubMed</b>		
#1	“Brain-Derived Neurotrophic Factor”[Mesh] OR “BDNF” OR “brain-derived neurotrophic factor”	29,312
#2	“Myocardial Ischemia”[Mesh] OR “Myocardial ischemia” OR “Coronary Artery Disease”[Mesh] OR “Coronary Atherosclerosis” OR “Coronary Disease”[Mesh] OR “Coronary Heart Disease*” OR “ischemic heart” OR “ischemia”	707,485
#3	#1 AND #2	1,184
<b>Embase</b>		
#1	‘brain derived neurotrophic factor’/exp OR ‘bdnf’ OR ‘brain derived neurotrophic factor’ OR ‘brain-derived neurotrophic factor’	50,031
#2	(‘ischemic heart disease’/exp OR ‘coronary heart disease’ OR ‘ischemia heart disease’ OR ‘ischemic cardiac disease’ OR ‘ischemic cardiopathy’ OR ‘ischemic heart disease’)	807,302
#3	#1 AND #2	390
<b>Web of Science</b>		
#1	TS=“brain-derived neurotrophic factor” OR TS=“BDNF” OR TS=“brain derived neurotrophic factor”	33,432
#2	TS=“myocardial ischemia” OR TS=“coronary artery disease” OR TS=“coronary atherosclerosis” OR TS=“coronary diseases” OR (TS=“heart disease” AND TS=“coronary”) OR (TS=“heart disease” AND TS=“ischemic”) OR TS=“ischemic cardiac disease”	307,020
#3	#1 AND #2	158
<b>Cochrane Library</b>		
#1	“BDNF” OR “brain-derived neurotrophic factor”	1,802
#2	“Myocardial Ischemia” OR “Coronary Artery Disease” OR “ischemia” OR “ischemic heart” OR “heart disease, coronary” OR “ischemic cardiac disease”	44,993
#3	#1 AND #2	47