

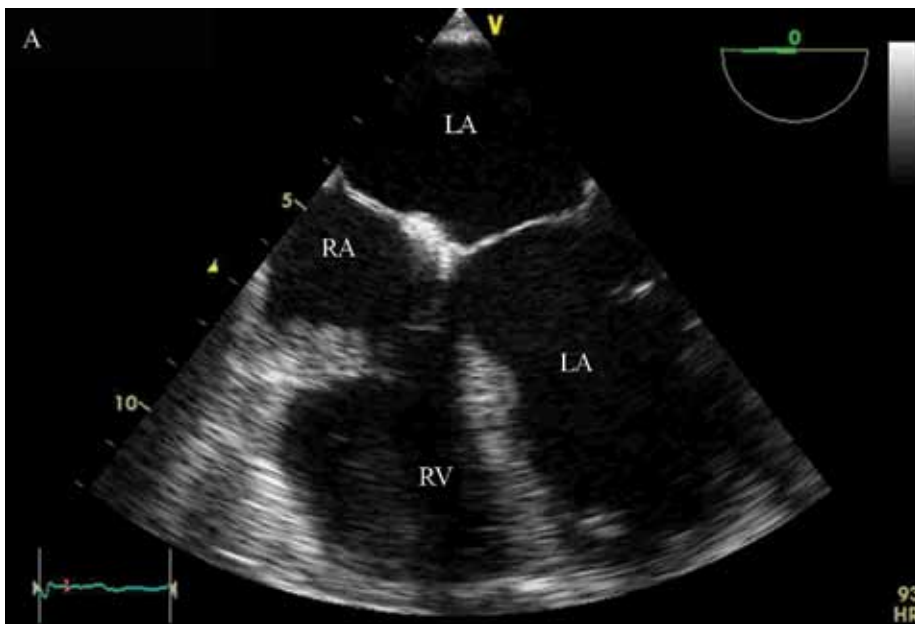


Incidentally Detected Tricuspid Papillary Fibroelastoma

Ali Hosseinsabet, MD*, Mahmoud Shirzad, MD, Maryam Sotoudeh Anvari, MD

Tehran Heart Center, Tehran University of Medical Sciences, Tehran, Iran.

A 56-year-old man was admitted to our hospital for coronary artery bypass graft surgery. Preoperative transthoracic echocardiography revealed thickening of the anterior leaflet of the tricuspid valve, and transesophageal echocardiography showed oval and irregular-shaped masses, featuring well-demarcated borders and a homogenous texture, attached to the atrial side of the anterior leaflet of the tricuspid valve with a small, tiny, mobile stalk. In the operating room, this mass was resected and gross anatomical examination showed multiple finger-like fronds attached to the stalk. When it was placed in saline, the mass revealed typical "sea anemone", suggestive of papillary fibroelastoma. Although echocardiography had been previously conducted for routine preoperative evaluation, this incidental finding significantly changed the surgical plan.



J Teh Univ Heart Ctr 2014;9(3):143-144

*Corresponding Author: **Ali Hosseinsabet**, Assistant Professor of Cardiology, Tehran Heart Center, Karegar Shomali Avenue, Tehran, Iran. 1411713138. Tel: +98 21 88029731. Fax: +98 21 88029731. E-mail: ali_hosseinsabet@yahoo.com.

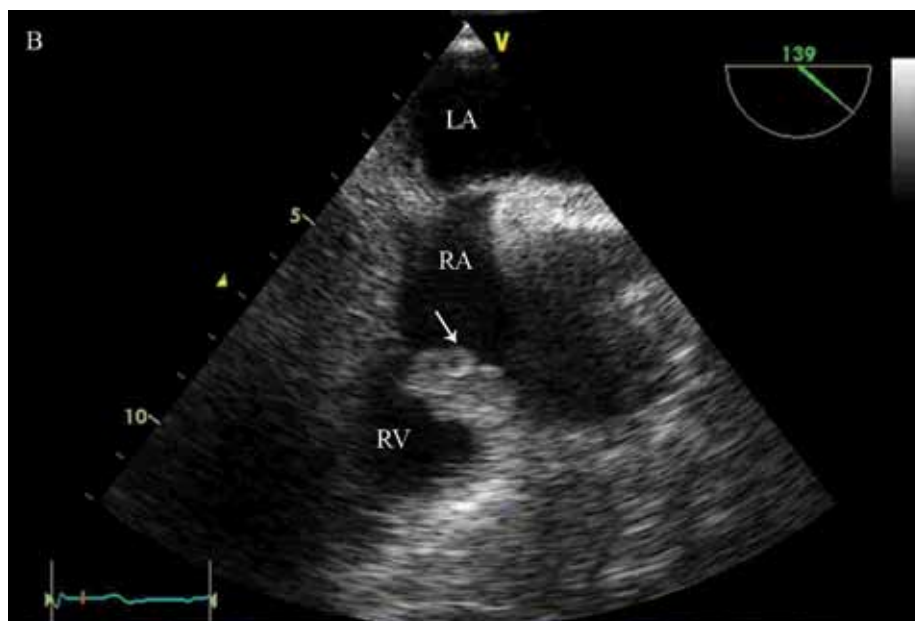


Figure 1. Transesophageal echocardiography views (0° [A], and 139° [B]), showing multiple round, oval, irregular, and well-demarcated masses with a small stalk on the anterior leaflet of the tricuspid valve (arrow)

LA, Left atrium; LV, Left ventricle; RA, Right atrium; RV, Right ventricle

To watch the following videos, please refer to the relevant URLs:

Video 1. Transesophageal echocardiography (0°), illustrating multiple round, oval, irregular, and well-demarcated masses on the anterior leaflet of the tricuspid valve

<http://jthc.tums.ac.ir/index.php/jthc/article/view/698/417>

Video 2. Transesophageal echocardiography (139°), demonstrating multiple round, oval masses with a small stalk on the anterior leaflet of the tricuspid valve

<http://jthc.tums.ac.ir/index.php/jthc/article/view/698/418>