

Hydatid Cyst Mimicking a Pericardial Cyst

Muzaffer Kahyaoğlu, MD*, Çetin Geçmen, MD, İbrahim Akin İzgi, MD

Department of Cardiology, Kartal Koşuyolu Yüksek İhtisas Training and Research Hospital, İstanbul, Turkey.

A 27-year-old female patient presented to our clinic because of atypical chest pain. Her past medical history was unremarkable for any chronic illness. Her vital signs comprised a heart rate of 85 bpm, blood pressure of 125/70 mm Hg, and oxygen saturation of 98%. Physical examination was unremarkable. Electrocardiography showed normal sinus rhythm without any ST-segment and T-wave abnormalities. Her blood work, including electrolytes, complete blood count, hepatic panel, and troponin level, was within the normal limits. Transthoracic echocardiography in the parasternal short-axis view revealed a third chamber besides the left and right ventricles (Figure 1). Modified substernal view showed 2 cysts in the liver (Figure 2). A contrast-enhanced chest computed tomography scan in the axial plane demonstrated 2 cysts in the liver, and there was no pericardial involvement (Figure 3 and Figure 4). The patient was referred for general surgery on the diagnosis of a hydatid cyst.

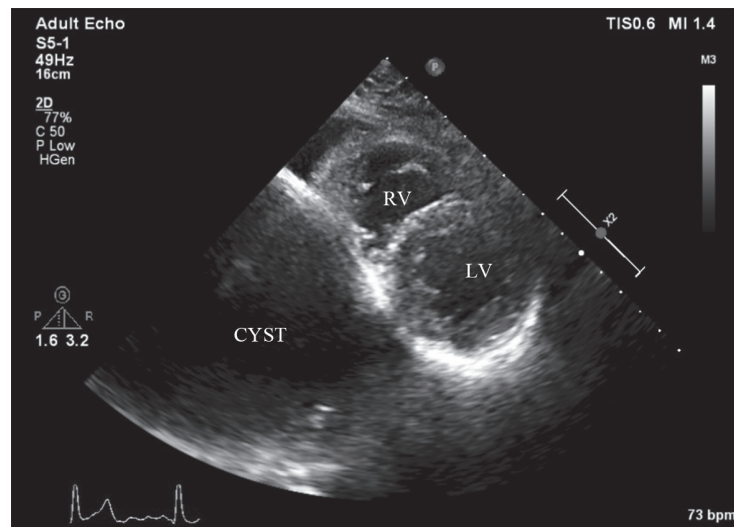


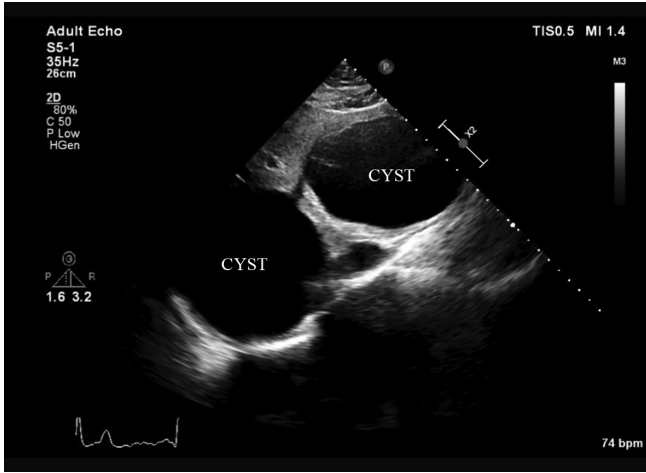
Figure 1. Transthoracic echocardiography in the parasternal short-axis view, showing a third chamber besides the left and right ventricles. RV, Right ventricle; LV, Left ventricle

J Teh Univ Heart Ctr 2017;12(4):192-193

This paper should be cited as: Kahyaoğlu M, Geçmen Ç, İzgi İA. Hydatid Cyst Mimicking a Pericardial Cyst. *J Teh Univ Heart Ctr* 2017;12(4):192-193.

Keywords: Echinococcosis • Echocardiography • Tomography, x-ray, computed

*Corresponding Author: Muzaffer Kahyaoğlu, Kartal Koşuyolu Yüksek İhtisas Eğitim ve Araştırma Hastanesi Kardiyoloji Kliniği, 34865 Kartal, Cevizli, İstanbul, Turkey. Tel: +90 506 2333599. Fax: +90 216 5001500. E-mail: mkahyaoğlu@hotmail.com.



To watch the following videos, please refer to the relevant URLs:

Video 1 for Figure 1A.

<http://jthc.tums.ac.ir/index.php/jthc/article/view/691/615>

Video 2 for Figure 1B.

<http://jthc.tums.ac.ir/index.php/jthc/article/view/691/616>

Figure 2. Modified substernal echocardiography view, showing 2 cysts in the liver.

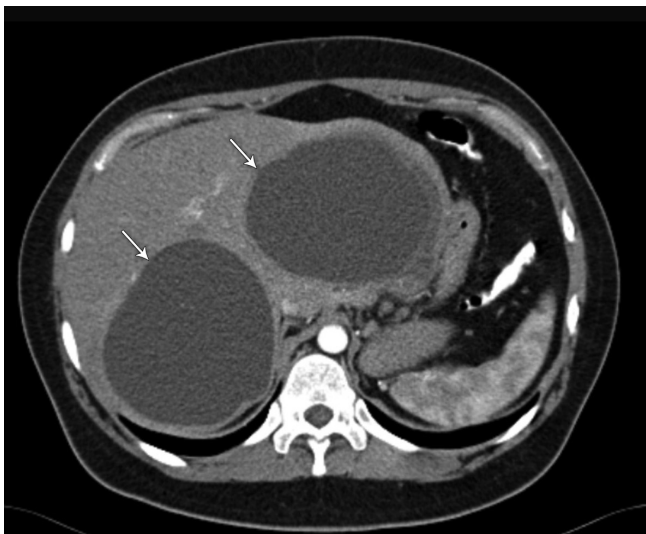


Figure 3. Contrast-enhanced chest computed tomography scan in the axial plane, showing 2 cysts in the liver (arrows).

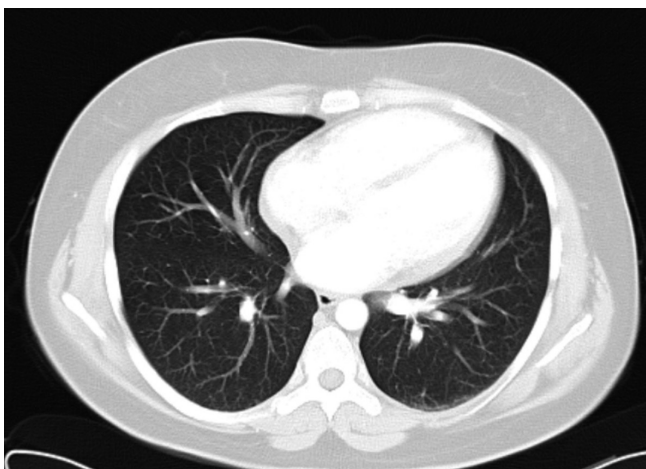


Figure 4. Contrast-enhanced chest computed tomography in the axial plane, showing no pericardial involvement.